



Now with Touch Screen

BM3Vet Touch

EtCO₂ Ready

Multi-parameter portable veterinary vital sign monitor

Versatile, Portable, Lightweight BM3Vet Touch is specially designed to be used in vet surgery, treatment or cage areas. Compact design with unique handle makes it easy to move from room to room. Its 8" color touch monitor displays all the vital signs that you want in different colors to recognize each parameter easily.

Built-in printer offers documentation of all measured values as well as up to 3 waveforms of information. Alarms and settings are easily adjustable and can be retained after turning off the power.

FEATURES

Superior Advantages

- ECG, SpO₂, NIBP, Respiration and Temperature
Includes: temperature, transreflectance SpO₂, and esophageal probes*
- EtCO₂ ready (can add plug and play main or sidestream EtCO₂ at any time)
- 8" high resolution touch screen monitor
- Individual sweep speed setting for each parameter
- Multiple display modes
- Remembers your settings
- Industry's longest warranty - 4 Years!

Enhanced Data Management

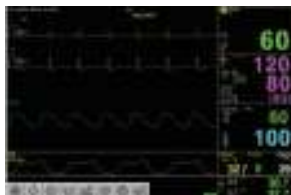
- 168 full hours of trend data stored
- 20 cases × 10 sec alarm waveform stored
- Includes B-Link software for data collection

High-performance Measurement

- ST level, PVC count real-time display
- Very low-perfusion SpO₂ measurement

Transportable

- Li-ion rechargeable battery allows cordless use for up to 1.5 hours



Main Display Mode



ST Analysis Display Mode



Large Parameter Display Mode



Trend Display Mode



*See "Standard Accessories" section on back for all probes included. The esophageal probe is a 3 lead ECG plus temperature.

SPECIFICATIONS

General >>>

Monitor Performance Specifications

| | | | | | | | | | | | | | | | | | | | | | | | | | |
|---|--|--|-----|--|-----|---|-----|---|------|-------------------------------|-----|---------------------------------------|-----|------------------|-----|---------------------------------------|-----|---------------------------------------|-----|---|-----|--|-----|----------------------------|------|
| Display, Resolution | 8" color touch TFT LCD, 800 x 600 pixels | | | | | | | | | | | | | | | | | | | | | | | | |
| Dimension, Weight | 238 (W) x 250 (H) x 163 (D) mm, approx. 3.1 kg | | | | | | | | | | | | | | | | | | | | | | | | |
| Trace | 4 waveforms: 2 ECG, SpO ₂ , RR or EtCO ₂ Sweep speed: 6.25, 12.5, 25, 50 mm/sec | | | | | | | | | | | | | | | | | | | | | | | | |
| Indicators | Categorized alarms (3 priority levels) Heart beat tone SpO ₂ pulse pitch tone Battery status External power LED | | | | | | | | | | | | | | | | | | | | | | | | |
| Interfaces | DC input connector: 18 VDC, 2.5 A Defibrillator Sync. Output: - Signal Level: 0 to 5 V pulse - Pulse width: 100 ± 10 ms LAN digital output for transferring data Nurse call system connection DC output: 5 VDC, 1 A Max | | | | | | | | | | | | | | | | | | | | | | | | |
| Battery | Rechargeable Li-ion battery 1.5 hours of continuous operation | | | | | | | | | | | | | | | | | | | | | | | | |
| Thermal Printer (option) | Speed: 25, 50 mm/sec, paper width: 58 mm | | | | | | | | | | | | | | | | | | | | | | | | |
| Data Storage | 168-hour trends 20 cases of 10 sec alarm waveform | | | | | | | | | | | | | | | | | | | | | | | | |
| Language | English, French, Spanish, Italian, German, Chinese, Russian, Czech, Polish, Turkish, Romanian, Portuguese, Bulgarian, Korean, Hungarian | | | | | | | | | | | | | | | | | | | | | | | | |
| Accessory | | | | | | | | | | | | | | | | | | | | | | | | | |
| Standard Accessories | <table border="0"> <tr><td>3 lead vet ECG cable</td><td>1ea</td></tr> <tr><td>ECG extension cable</td><td>1ea</td></tr> <tr><td>NIBP extension tube (3m)</td><td>1ea</td></tr> <tr><td>NIBP vet cuff neonate disposable #1-#5</td><td>1set</td></tr> <tr><td>NIBP vet cuff infant reusable</td><td>1ea</td></tr> <tr><td>SpO₂ extension cable (2m)</td><td>1ea</td></tr> <tr><td>Esophageal probe</td><td>1ea</td></tr> <tr><td>Transflectance SpO₂ probe</td><td>1ea</td></tr> <tr><td>Temperature probe (rectal/esophageal)</td><td>1ea</td></tr> <tr><td>Reusable multisite SpO₂ probe</td><td>1ea</td></tr> <tr><td>B-Link automated record keeping software</td><td>1ea</td></tr> <tr><td>DC adapter (18 VDC, 2.5 A)</td><td>1set</td></tr> </table> | 3 lead vet ECG cable | 1ea | ECG extension cable | 1ea | NIBP extension tube (3m) | 1ea | NIBP vet cuff neonate disposable #1-#5 | 1set | NIBP vet cuff infant reusable | 1ea | SpO ₂ extension cable (2m) | 1ea | Esophageal probe | 1ea | Transflectance SpO ₂ probe | 1ea | Temperature probe (rectal/esophageal) | 1ea | Reusable multisite SpO ₂ probe | 1ea | B-Link automated record keeping software | 1ea | DC adapter (18 VDC, 2.5 A) | 1set |
| 3 lead vet ECG cable | 1ea | | | | | | | | | | | | | | | | | | | | | | | | |
| ECG extension cable | 1ea | | | | | | | | | | | | | | | | | | | | | | | | |
| NIBP extension tube (3m) | 1ea | | | | | | | | | | | | | | | | | | | | | | | | |
| NIBP vet cuff neonate disposable #1-#5 | 1set | | | | | | | | | | | | | | | | | | | | | | | | |
| NIBP vet cuff infant reusable | 1ea | | | | | | | | | | | | | | | | | | | | | | | | |
| SpO ₂ extension cable (2m) | 1ea | | | | | | | | | | | | | | | | | | | | | | | | |
| Esophageal probe | 1ea | | | | | | | | | | | | | | | | | | | | | | | | |
| Transflectance SpO ₂ probe | 1ea | | | | | | | | | | | | | | | | | | | | | | | | |
| Temperature probe (rectal/esophageal) | 1ea | | | | | | | | | | | | | | | | | | | | | | | | |
| Reusable multisite SpO ₂ probe | 1ea | | | | | | | | | | | | | | | | | | | | | | | | |
| B-Link automated record keeping software | 1ea | | | | | | | | | | | | | | | | | | | | | | | | |
| DC adapter (18 VDC, 2.5 A) | 1set | | | | | | | | | | | | | | | | | | | | | | | | |
| Optional Accessories | <table border="0"> <tr><td>5 lead vet ECG cable</td><td></td></tr> <tr><td>Temperature probe (skin)</td><td></td></tr> <tr><td>Mainstream CO₂ airway adapter set</td><td></td></tr> <tr><td>Sidestream CO₂ airway adapter set</td><td></td></tr> </table> | 5 lead vet ECG cable | | Temperature probe (skin) | | Mainstream CO ₂ airway adapter set | | Sidestream CO ₂ airway adapter set | | | | | | | | | | | | | | | | | |
| 5 lead vet ECG cable | | | | | | | | | | | | | | | | | | | | | | | | | |
| Temperature probe (skin) | | | | | | | | | | | | | | | | | | | | | | | | | |
| Mainstream CO ₂ airway adapter set | | | | | | | | | | | | | | | | | | | | | | | | | |
| Sidestream CO ₂ airway adapter set | | | | | | | | | | | | | | | | | | | | | | | | | |
| Optional Module | | | | | | | | | | | | | | | | | | | | | | | | | |
| | <table border="0"> <tr><td>Mainstream CO₂ module (sensor)</td><td></td></tr> <tr><td>Sidestream CO₂ module (sensor)</td><td></td></tr> </table> | Mainstream CO ₂ module (sensor) | | Sidestream CO ₂ module (sensor) | | | | | | | | | | | | | | | | | | | | | |
| Mainstream CO ₂ module (sensor) | | | | | | | | | | | | | | | | | | | | | | | | | |
| Sidestream CO ₂ module (sensor) | | | | | | | | | | | | | | | | | | | | | | | | | |

Specifications can be changed without prior notification.

You may have distortion or signal noise when you use nonstandard or other brands' accessories.

We strongly recommend you use only the authorized accessories which we supply.



South Korea: Bionet Co., Ltd. www.ebionet.com
Tel: +82-70-7585-6418 (Int'l)/+82-2-6300-6483 (Domestic)
E-mail: sales@ebionet.com (Int'l)/yunms@ebionet.com (Domestic)

North America (U.S.A.): Bionet America, Inc.
Tel: +1-714-734-1760
E-mail: sales@BionetUS.com www.BionetUS.com

China : Bionet China, Inc. (中国佰奈特)
Tel: +86-10-8476-3601
E-mail: ayw1969@ebionet.com www.ebionet.com.cn

Performance >>>

ECG

| | |
|------------------------------------|--|
| Lead Type | 3-lead, 5-lead |
| Lead Selection | 3-lead: I, II, III 5-lead: I, II, III, aVR, aVL, aVF, V |
| ECG Waveform | 3-lead: 1 Channel 5-lead: 1 Channel |
| Heart Rate Range | 30 - 300 bpm |
| Heart Rate Accuracy | ±1 bpm or ±1%, whichever is greater |
| Sweep Speed | 6.25, 12.5, 25, 50 mm/sec |
| Filter | Diagnosis: 0.05 - 150 Hz Monitoring: 0.5 - 40 Hz Moderate: 0.5 - 25 Hz Maximum: 5 - 25 Hz |
| S-T Segment Detection Range | -2.0 to 2.0 mV |
| Arrhythmia Analysis | Asystole, VTACH, V-fib |
| Pacemaker Detection Mode | Indicator on waveform display (user selectable) |
| Protection | Against electro-surgical interference and defibrillation |

Respiration

| | |
|--------------------------|----------------------------|
| Method | Thoracic impedance |
| Channel Selection | RA-LA or RA-LL |
| Measurement Range | 5 - 120 breaths per minute |
| Accuracy | ±1 breath per minute |
| Apnea Alarm | Yes |

SpO₂

| | |
|----------------------------|---|
| Saturation Range | 0 to 100% |
| Saturation Accuracy | 70 to 100% ±2 digits, 0 to 69% unspecified |
| Pulse Rate Range | 30 to 254 bpm |
| Pulse Rate Accuracy | ±2 bpm |

NIBP

| | |
|--------------------------|--|
| Method | Oscillometric |
| Operation Mode | Manual/Automatic/Continuous |
| Pressure Range | 0 - 300 mmHg |
| Accuracy | ±3 mmHg |
| Measurement Range | Systolic: 40 - 265mmHg MAP: 27 - 222 mmHg Diastolic: 20 - 200 mmHg |
| Pulse Rate Range | 25 - 300 BPM |

Temperature

| | |
|--------------------------|-----------------------------------|
| Measurement Range | 0 to 50 °C (32 to 122 °F) |
| Accuracy | ±1 °C |
| Compatibility | YSI series 400 temperature probes |

Mainstream CO₂ (option)

| | |
|-----------------------------|---|
| Measurement Range | 0 to 150 mmHg, 0 to 19% |
| Accuracy | 0 - 40 mmHg ±2 mmHg, 41 - 70 mmHg ±5% of reading, 71 - 100 mmHg ±8% of reading, 101 - 150 mmHg ±10% of reading |
| Respiration Rate | 0 to 150 breaths per minute |
| Respiration Accuracy | ±1 breath per minute |

Sidestream CO₂ (option)

| | |
|-----------------------------|---|
| Measurement Range | 0 to 150 mmHg, 0 to 19% |
| Accuracy | 0 - 40 mmHg ±2 mmHg, 41 - 70 mmHg ±5% of reading, 71 - 100 mmHg ±8% of reading, 101 - 150 mmHg ±10% of reading |
| Respiration Rate | 2 to 150 breaths per minute |
| Respiration Accuracy | ±1 breath per minute |